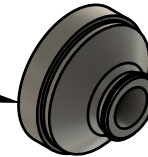
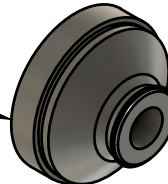


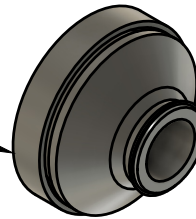
LM5184-M12: für 12,5mm Bohrung



LM5184-M16: für 16,5mm Bohrung



LM5184-M20: für 20,5mm Bohrung



Dept.	Technical reference	Created by LED-MARTIN GmbH 01.10.2024	Approved by	
		Document type	Document status	
		Title Durchführungstülle DNG Produktübersicht	DWG No.	
		Rev.	Date of issue	Sheet 1/1